

3052W

LOVE Series

3052W SLIDE-IN TUB

The American Tubs 3052W from our LOVE Series represents an ambitious balance of accessibility, compactness, and functionality.

The 30" wide, outward-swinging door allows near full front access to the seat making transfers from a wheelchair simpler, while still being able to open the door fully in a narrow, 60" wide bathroom space.

The 3052W comes highly recommended by in-home healthcare professionals for its simplicity when assisting wheelchair users, seniors with dramatically limited mobility, veterans, para- or quadriplegics, amputees, and those individuals with special needs. Special attention was paid to the door and locking mechanism to ensure a worry-free, leak-proof door seal. It is an excellent choice for individuals up to 220 lbs.



THERAPEUTIC SYSTEM OPTIONS



Hydromassage System - 10 Jet



Air Massage System - 20 Jet



MicroBubble Skin-Cleansing System

DOOR/DRAIN ORIENTATION

Left-Hand or Right-Hand



AVAILABLE COLORS

White or Biscuit



STANDARD FEATURES

- Marine-Grade Fiberglass & Resin Composite Tub Shell
- High-Gloss, Triple-Coated Gelcoat Finish
- One-Piece, Stainless-Steel Support Frame
- 6 Adjustable Leveling Legs
- Low, 6" Door Threshold
- Ergonomic, Curved Door Handle
- Water-Tight Door Seal
- 17" High, ADA-Compliant, Contoured Seat
- Interior Safety Grab Bar
- Deck-Mounted, U-Shaped Grab Bar
- Non-Slip, Textured Floor
- Integrated Door Drain
- 2 Integrated Front Access Maintenance Panels
- Color-Matched Extension Kit to Fill to 60"
- Flangeless Design

American Tubs

1274 E Cypress St, Covina, CA 91724

Telephone: 626.581.3588

Fax: 800.943.8652

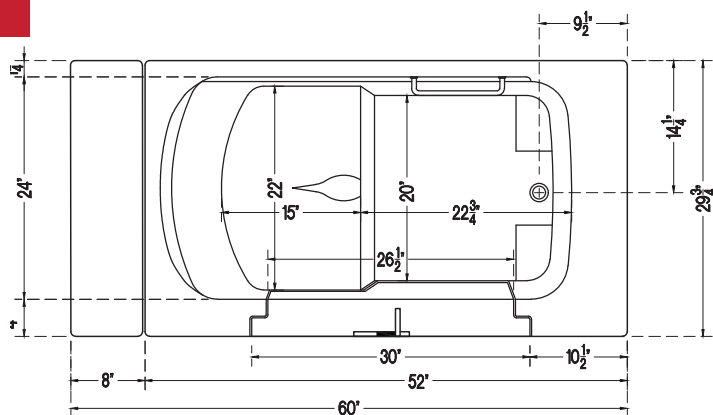
E-mail: sales@americantubs.com

© 2019 American Tubs

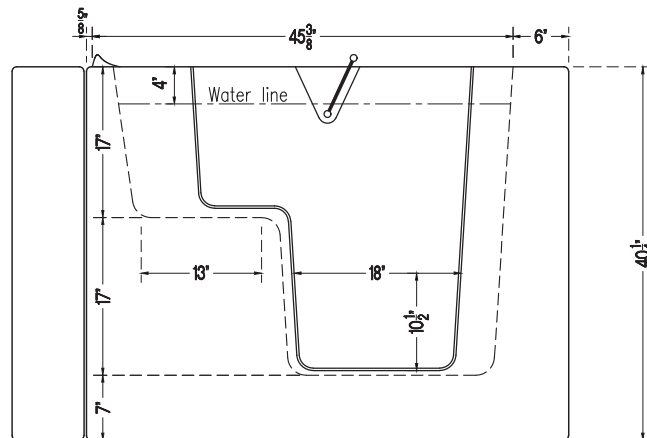
AmericanTubs.com



TOP VIEW



SIDE VIEW



TUB 3052W SPECIFICATIONS

Tub Dimensions	29 $\frac{3}{4}$ " W x 52" L x 40 $\frac{1}{4}$ " H
Top Diagonal	60"
Tub Weight	185 lbs.
Crated Dimensions	32" W x 54" L x 49" H
Water Capacity (with user inside approximately)	120 lb. / 63 Gallons 200 lb. / 58 Gallons 250 lb. / 55 Gallons
Seat Dimensions	H: 17"; W: 22"
Door Width	30" (at top)
Door Swing	Outward-Swinging

DRAIN OPTIONS

1 $\frac{1}{2}$ " Bath Drain & Overflow

2" HurryDrain™

Secondary Emergency Drain

Power Drain

FAUCET OPTIONS

Elite	4 pcs	Chrome	Modern
Bellevue	5 pcs	Chrome	Modern
Bellevue	5 pcs	Satin/Nickel	Modern
Bellevue	5 pcs	Oil-Rubbed Bronze	Modern
Salutation	5 pcs	Chrome	Classic
Kingston	1 pc	Chrome	Compact

Hydromassage System Add-Ons & Upgrades

- Leg Massage Only System
- Adjustable Bidet Jet
- Ozone Sanitization System
- Water-Heating Syllent Pump
- Friction Heater
- Inline Heater
- Additional Hip or Knee Jets
- Aromatherapy System

Optional Accessories

- Chromotherapy Light System
- Heated Seat & Backrest
- Neck Rest Pillow
- Seat Cushion
- L-Shaped Shower Curtain Rod
- Adjustable Shower Slide Bar
- Swinging Glass Shower Door
- Anti-Scald Valve
- Optional Tile Flange Kit
- Additional 12" Extension Kit
- End Panel for Seat and/or Faucet Side
- Bathing Support Harness

Plumbing Safety
CertifiedElectrical Safety
CertifiedLimited Lifetime
WarrantyExpedited Freight Shipping
(less than 2 weeks)

1274 E Cypress St, Covina, CA 91724

Telephone: 626.581.3588

Fax: 800.943.8652

E-mail: sales@americantubs.com

© 2019 American Tubs

