

3252W

LOVE Series

3252W SLIDE-IN TUB

The American Tubs 3252W from our LOVE Series is extremely roomy, luxury-sized, and packed with specialty features.

The extra-wide, 34½", outward-swinging door is the highlight of this slide-in or transfer seat walk-in tub design. The full seat access from the exterior of the tub was specifically engineered for wheelchair users, seniors with limited mobility, paraplegics, amputees, and those individuals with special needs.

It follows that the 3252W comes highly recommended by in-home and long-term health care professionals. Special attention was paid to the door and locking mechanism to ensure a worry-free, leak-proof door seal. The 3252W is also an excellent choice for individuals up to 250 lbs. that may have difficulty fitting through smaller tub doorways.



THERAPEUTIC SYSTEM OPTIONS



Hydromassage System - 10 Jet



Air Massage System - 20 Jet



MicroBubble Skin-Cleansing System

DOOR/DRAIN ORIENTATION

Left-Hand or Right-Hand



AVAILABLE COLORS

White or Biscuit



STANDARD FEATURES

- Marine-Grade Fiberglass & Resin Composite Tub Shell
- High-Gloss, Triple-Coated Gelcoat Finish
- One-Piece, Stainless-Steel Support Frame
- 6 Adjustable Leveling Legs
- Low, 6" Door Threshold
- Ergonomic, Push/Pull Door Handle
- Water-Tight Door Seal
- 17" High, ADA-Compliant, Contoured Seat
- Interior Safety Grab Bar
- Deck-Mounted, U-Shaped Grab Bar
- Non-Slip, Textured Floor
- Integrated Door Drain
- 2 Integrated Front Access Maintenance Panels
- Color-Matched Extension Kit to Fill to 60"
- Flangeless Design

American Tubs

1274 E Cypress St, Covina, CA 91724

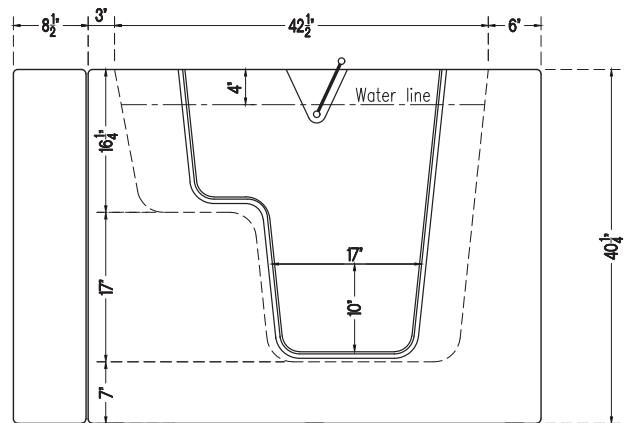
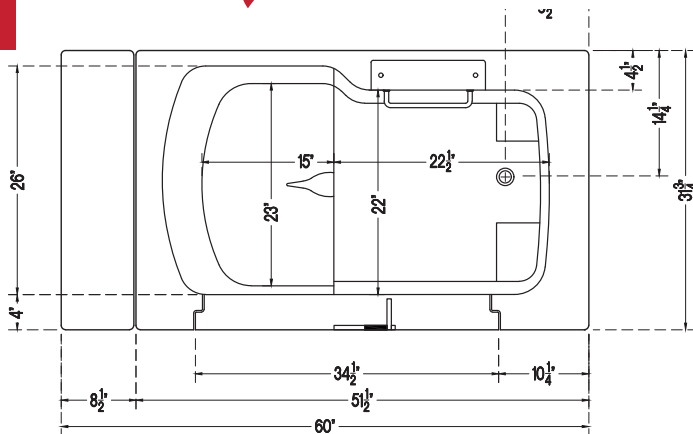
Telephone: 626.581.3588

Fax: 800.943.8652

E-mail: sales@americantubs.com

© 2019 American Tubs

AmericanTubs.com



TUB 3252W SPECIFICATIONS

Tub Dimensions	31 3/4" W x 51 1/2" L x 40 1/4" H
Top Diagonal	60 1/2"
Tub Weight	195 lbs.
Crated Dimensions	34 1/4" W x 54" L x 49" H
Water Capacity (with user inside approximately)	120 lb. / 65 Gallons 200 lb. / 60 Gallons 250 lb. / 57 Gallons
Seat Dimensions	H: 17"; W: 23"
Door Width	34 1/2" (at top)
Door Swing	Outward-Swinging

DRAIN OPTIONS

1 1/2" Bath Drain & Overflow
2" HurryDrain™
Secondary Emergency Drain
Power Drain

FAUCET OPTIONS

Elite	4 pcs	Chrome	Modern
Bellevue	5 pcs	Chrome	Modern
Bellevue	5 pcs	Satin/Nickel	Modern
Bellevue	5 pcs	Oil-Rubbed Bronze	Modern
Salutation	5 pcs	Chrome	Classic
Kingston	1 pc	Chrome	Compact

Hydromassage System Add-Ons & Upgrades

- Leg Massage Only System
- Adjustable Bidet Jet
- Ozone Sanitization System
- Water-Heating Syllent Pump
- Friction Heater
- Inline Heater
- Additional Hip or Knee Jets
- Aromatherapy System

Optional Accessories

- Chromotherapy Light System
- Heated Seat & Backrest
- Neck Rest Pillow
- Seat Cushion
- L-Shaped Shower Curtain Rod
- Adjustable Shower Slide Bar
- Swinging Glass Shower Door
- Anti-Scald Valve
- Optional Tile Flange Kit
- Additional 12" Extension Kit
- End Panel for Seat and/or Faucet Side
- Bathing Support Harness



Plumbing Safety
Certified



Electrical Safety
Certified



Limited Lifetime
Warranty



Expedited Freight Shipping
(less than 2 weeks)



1274 E Cypress St, Covina, CA 91724

Telephone: 626.581.3588

Fax: 800.943.8652

E-mail: sales@americantubs.com

© 2019 American Tubs

